

2022



IMPACT REPORT



A WORD OF GRATITUDE

2022 may just be the year that takes the cake for unpredictable twists and turns. But, mark my words, it'll also go down in history as the year of determination and development.

Despite the challenges posed by ups and downs in staffing, the lingering pandemic, and the ongoing global supply chain turbulence, B-Line's team remained steadfast. We tirelessly made thousands of CO₂-free deliveries on our fleet of tricycles, while also providing our diverse range of customers with critical warehouse space and trike-based advertising services.

We couldn't have achieved all this without the support of our wonderful customers, dedicated employees, and the amazing Portland community. That's why we're thrilled to present our annual B-Line Impact Report as a token of our gratitude.

FRANKLIN JONES

Founder & CEO of B-Line

B-LINE: CREATING SUSTAINABLE COMMUNITIES

WHAT DOES A THRIVING COMMUNITY LOOK LIKE?

B-Line is committed to providing our community with livable cities. This means less pollution, less traffic, supporting local businesses, and helping those in need. At B-Line, we provide affordable warehousing, delivery, and advertising to small business owners. Our urban delivery services reduce carbon footprints through our electric trikes.

How do we do it? We collaborate with amazing partners!

B-CYCLES



Agilyx and Vancouver Plastics help collect and facilitate the recycling of Styrofoam and PakTech lids through this program

GREEN WHEELS



In collaboration with New Seasons Market, B-Line simplifies the process for small and emerging vendors to consolidate and deliver their goods.

B-SHARES



In partnership with Whole Foods Market, Clay Street Table, and others, B-Shares delivers food to local shelters.

CSA PARTNERSHIPS



Providing single drop point delivery and warehousing for our local farmers in partnership with the Pacific NW CSA Coalition

Certified



Corporation

PROUDLY B-CORP CERTIFIED SINCE 2010, WE PROVIDE DELIVERY AND STORAGE OF PRODUCTS OUT OF THE REDD ON SALMON STREET IN PORTLAND'S CENTRAL EASTSIDE INDUSTRIAL DISTRICT.

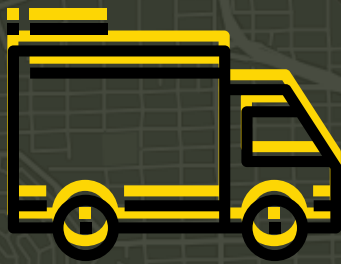
ENVIRONMENTAL IMPACTS

THE POWER OF A TRIKE



523,019 LBS OF CO₂

EMISSIONS AVOIDED



321,538

Miles Avoided

Miles avoided is understood as the mileage that a diesel truck would have driven if B-Line did not provide carbon-free or aggregated delivery services for our clients.



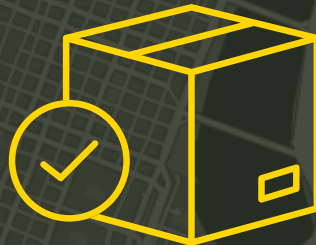
That's like flying round trip from PDX to NYC

x709



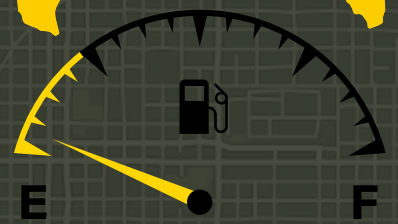
75,300

Gallons Recycled



41,688

Deliveries Made



23,286

Gallons of Gas Avoided



82,587.77

Saved on Gas

IT WOULD TAKE **10,784 TREES** ONE YEAR TO SEQUESTER THIS MUCH CARBON

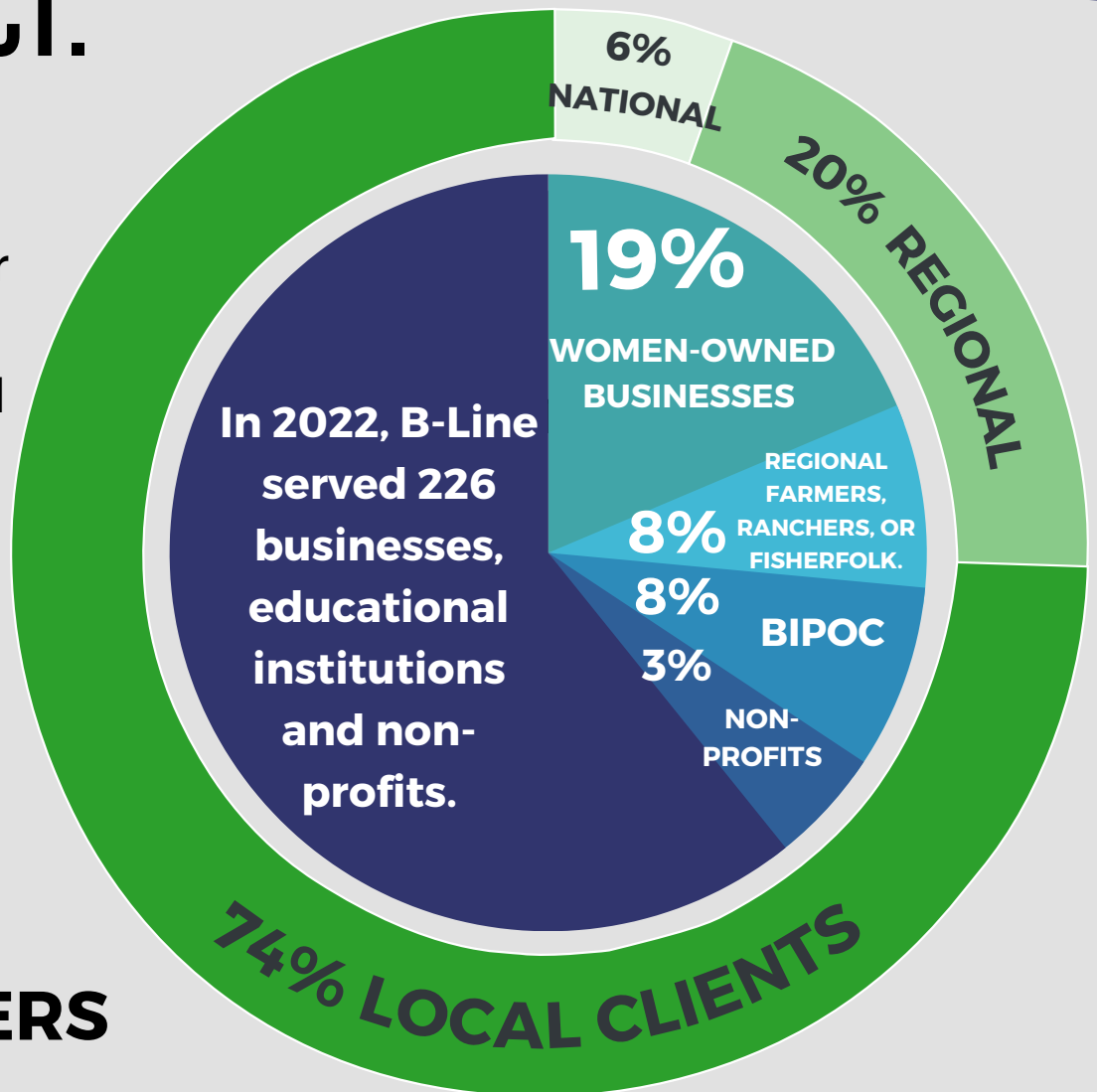


CLIENT IMPACT

TINY TRIKES. HUGE IMPACT.

Our trike and truck delivery system makes for fast and easy deliveries to local accounts, ranging from restaurants and offices to regional retailers and institutional buyers.

CLIENT BREAKDOWN



CSA PARTNERS



B-Line grew its CSA delivery partnerships with 17 farms in 2022. By delivering CSAs by trike, farmers save time, can consolidate with other farms, and continue to grow their own businesses.

SOCIAL IMPACT

B-SHARES

Our B-shares program provides en-route food rescue so we can turn food waste into meals for those in need.



OF FOOD SAVED BY WHOLE FOODS AND DONATED TO B-SHARE PARTNERS



CREATED FROM DONATED FOOD, SERVED BY OUR PARTNERS TO THOSE IN NEED.



As part of our B-Shares program, we are proud to offer consolidated temperature-sensitive storage for Clay Street Table, enabling them to build a community around a shared table.

OUR B-SHARE PARTNERS





EMPLOYEE EXPERIENCE

AT B-LINE, WE ARE COMMITTED TO CREATING AN INCLUSIVE WORK ENVIRONMENT AND CARING FOR OUR EMPLOYEES JUST AS MUCH AS THEY CARE FOR OUR COMMUNITY.

80% BIKE TO WORK MOST DAYS



93% BELIEVE B-LINE CHAMPIONS SUSTAINABILITY



98% FEEL SUPPORTED BY MANAGEMENT



"IT IS A PLEASURE TO WORK WITH MY COWORKERS, THEY ALL MAKE THE WORK MORE FUN AND INTERESTING. B-LINE FEELS LIKE A FAMILY OF SORTS. MY PERSONAL VALUES ALSO ALIGN WITH THE MISSION OF THE COMPANY. I ENJOY BEING ABLE TO FIT INTO MULTIPLE ROLES, RIDE OUTDOORS, CRUNCH THE NUMBERS AND DRIVE A FORKLIFT."

WE ASKED OUR STAFF WHY THEY LIKE WORKING AT B-LINE

"OUR CONTINUED IMPACT WITHIN THE REGIONAL FOOD ECONOMY. OUR UNIQUE POSITIONS AMONGST OTHER LOGISTICS PROVIDERS. THE HOPE THAT ONE DAY, WE'LL SCALE EFFECTIVELY BOTH WITHIN PORTLAND AND INTO NEW MARKETS."



THANK YOU FOR HELPING US BUILD A MORE LIVABLE COMMUNITY

[Like what you see? Click here to let us know.](#)